

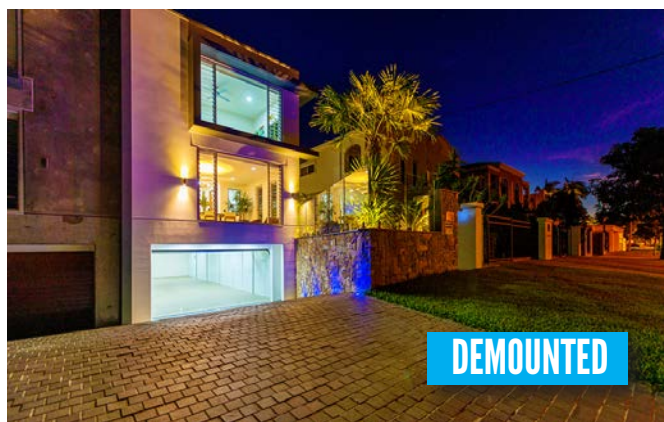


PROTECT YOUR PROPERTY WITH AWMA'S DEMOUNTABLE FLOOD BARRIERS

AWMA's Demountable Flood Barriers allow property owners to manage their own flood protection.

Once the side frames have been installed, the barrier posts and segments (weighing a maximum of 10kg each) can be manually constructed by a single operator at any given time.

AWMA Flood Barriers are suitable for isolating flood and/or storm waters from any low lying areas in and around existing infrastructure. AWMA's design team ensure all products are tailor made to meet the specific site and operational requirements.



Follow AWMA Projects and Latest News at



/AWMA WaterControlSolutions



/@AWMA_penstocks



awmawatercontrol.com.au



/AWMA Water Control Solutions



/awmawatercontrol

GENERALLY SPEAKING

"GOOGLE IT"

These days it's so easy to 'Google' anything in an effort to find an experienced supplier, the right product, fastest service or cheapest price.

We gain access to the best the world has to offer, not just what is locally available or what we thought we were limited to.

AWMA's website provides a platform to present our projects and the innovative solutions we develop with our partners.

AWMA has grown in capacity as the power of the internet has grown and now like many other Australian companies we leverage from digital media, to open up opportunities all around the world.

AWMA is currently working on exciting prospects across Australia and around the globe. Keep watching our website to see where we have been and what we are doing, it's always interesting and often formulates an innovative solution that could benefit your industry.



Brett Kelly
Managing Director

DID YOU KNOW?

AWMA have supplied water control equipment, for most major airports in Australia.



STAFF SIGNED UP FOR SAFETY

AWMA demonstrate their commitment to health and safety as staff volunteer to deliver an in-house safety slogan. Pictured above is the winning slogan. Other entries included: 'If you are aware of it, take care of it' and 'At work or play, let safety lead the way'. AWMA adhere to all safety standards and enjoy the challenges brought on by the processes of continual improvement.

CLOUD BASED IRRIGATION MODERNISATION

Works on the Jemalong Irrigation Distribution System continue as AWMA design, manufacture and install automated water control gates across 48 sites.

Jemalong Irrigation Limited (JIL) are the largest irrigation entity on the Lachlan River. All sites will be automated and accessible via a cloud based SCADA system, greatly improving operational efficiencies.

The 57 automated LayFlat gates are custom designed to meet site specifications along the 300km of supply channel.

AWMA have proven to be industry leaders in irrigation modernisation programs for over a decade now and are currently working with irrigation delivery partners within Australia and overseas on numerous irrigation-based projects..

UPCOMING EVENTS

SEPTEMBER

WIOA VIC, Bendigo
WaterNZ, Hamilton

OCTOBER

Elmore Field Days, Elmore

NOVEMBER

ANCOLD, Brisbane



PENSTOCKS UNDER PRESSURE

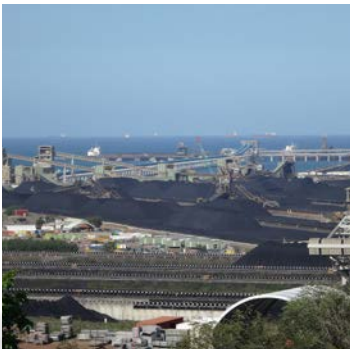
Dalrymple Bay Coal Terminal (DBCT) exports thermal and metallurgical coal from Queensland to ports around the world. The DBCT Industrial Dam upgrade is a project to improve coal fines settlement and recovery processes following stormwater events.

A number of penstocks will be subject to long term inundation and are required to operate in extremely harsh environments, within a high concentration of suspended coal fines.

AWMA worked closely with project partners to develop penstocks which:

- operate in fluids containing suspended coal particles
- withstand saturated coal pressures up to twice the density of water
- seal with minimal leakage
- have gate leaves fitted with shedder plates to reduce static coal buildup
- withstand cyclonic wind loading in accordance with AS1170.2
- allow for easy installation into existing structures
- have an actuation system IP68 rated which allows for total immersion under flood conditions
- require minimal ongoing maintenance
- operate with portable actuators
- measure up to 4m wide x 2.2m high

All penstocks were custom designed and manufactured by AWMA using grade 316 stainless steel in order to achieve the target design life of 25 years.



AUTOMATIC STORMWATER HARVESTING

AWMA were engaged by Pensar Construction Group, to assist with Brisbane City Council (BCC) stormwater harvesting schemes. The projects will provide irrigation water and recycled stormwater to nearby schools, small businesses, sports fields and parklands. The works included infrastructure required to extract stormwater, store it and deliver it into distribution tanks.

The Norman Park site involved installation of a new custom designed weir and tidal gate, into a rebuilt concrete lined drain to create in-channel storage.

AWMA's Floating Flood Gate allows BCC to automatically manage the stormwater harvesting asset without any operator intervention. The gates close automatically when the downstream tidal water levels rise above the crest of the weir, preventing salt water intrusion into the storm water harvesting scheme.

As upstream levels increase the gates will open to prevent flooding upstream of the weir.

The gates are designed to be self-regulating and effectively maintenance free.

DEEP CREEK ENVIRONMENTAL REGULATOR

AWMA was engaged by York Civil to supply an environmental regulator as part of DEWNR's Riverine Recovery Project.

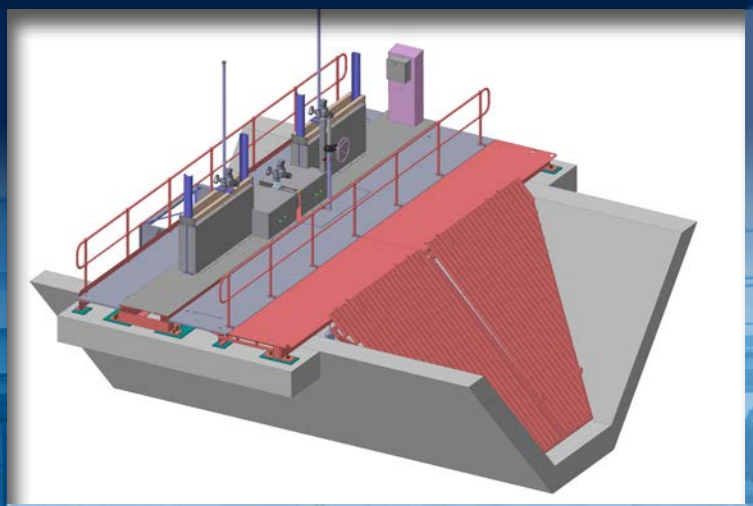
The 2-in-1 automated MultiBay LayFlat gate was installed adjacent to a new fishway, to improve the flow of water from the River Murray onto the Pike Floodplain. The design of the AWMA LayFlat also allows for safe passage of fish migrating from the floodplain back into the river.

The fully automated gate structure consists of two gate sections with each gate leaf measuring 1800mm wide x 2900mm high.



Photos courtesy of Department of Environment, Water and Natural Resources (DEWNR)

BIG OR SMALL AWMA DO IT ALL



WASTEWATER DESALINATION FLOOD MITIGATION ENVIRONMENTAL IRRIGATION

awma
Water Control Solutions

HEAD OFFICE

Phone +61 3 5456 3331 Email info@awmawatercontrol.com.au

118 Roviras Road, PO Box 433, Cohuna Victoria 3568

www.awmawatercontrol.com.au

